



TOUCH-POINT ASSEMBLY INSTRUCTIONS

PLEASE READ ALL INSTRUCTIONS BEFORE OPERATING THIS APPERATUS.

- TO INCREASE LONGEVITY, PLEASE USE 25LB WEIGHT
- PLEASE USE IN A CONTROLLED SETTING
- DO NOT USE THIS APPERATUS FOR ANYTHING OTHER THAN ITS INTENDED PURPOSE

1. INSTRUCTION MANUAL

Use pictures for important points or important notions

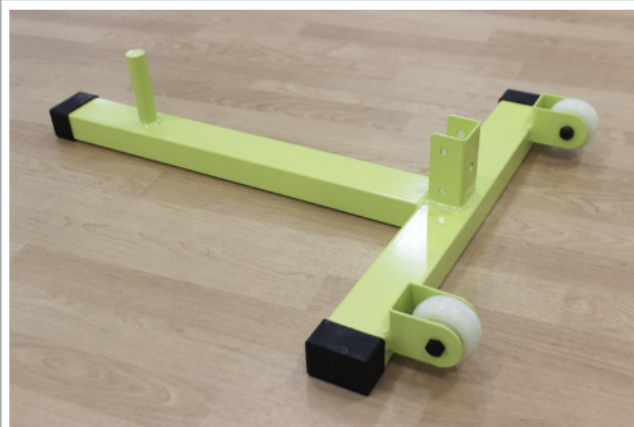
<p>NECESSARY ITEM:</p> 	<ul style="list-style-type: none">• (1) ADJUSTABLE WRENCH NECESSARY FOR ASSEMBLY
	<ul style="list-style-type: none">• (2) ON-POINT VOLLEYBALL BOXES<ol style="list-style-type: none">1. 34" x 32" x 4"2. 67" x 7" x 2"



- (1) VERTICAL INNER POLE (SILVER)



- (1) VERTICAL OUTER POLE (YELLOW)



- (1) BASE

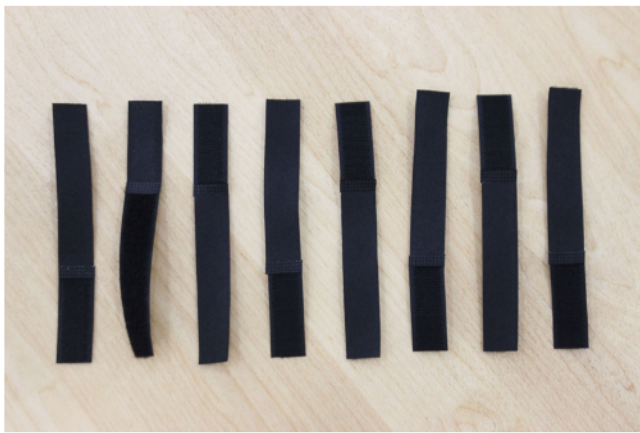


- (5) NUTS





- (3) 3.5" BOLTS
- (2) 3.2" BOLTS



- (16) VELCRO



- (1) 20" HOOP



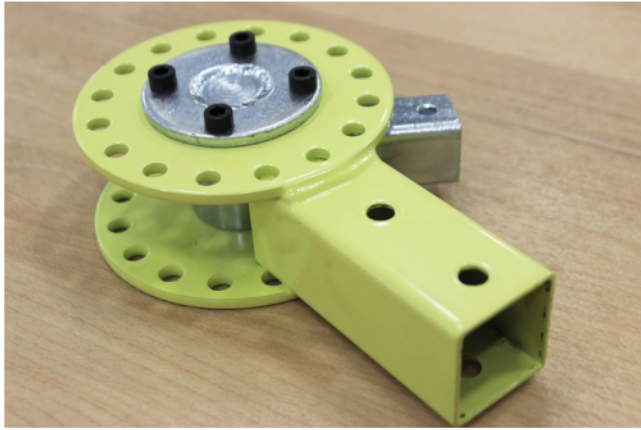
- (1) 30" HOOP



- (1) TEMPO TARGET HEAD



- (2) NETS



- (1) ANGLE WHEEL



- TOUCH-POINT ACCESSORY BOX
- 39" X 19" X 2"

2. MANUAL & ASSEMBLY INSTRUCTIONS



1. INSERT SILVER
INNER PRE-DRILLED

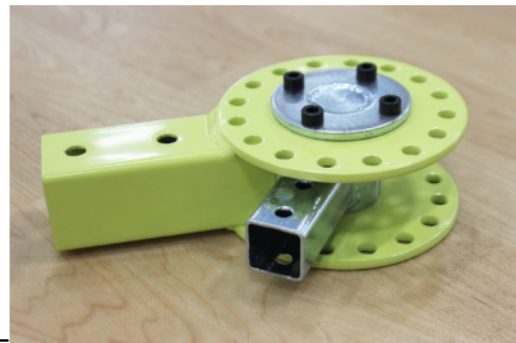
POLE INTO YELLOW OUTER POLE

2. VERTICALLY PLACE ASSEMBLED POLE ON THE BASE



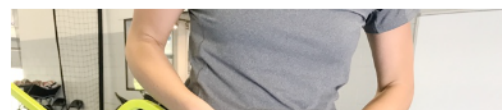
3. LINE UP OUTERMOST PRE-DRILLED HOLE OF THE BASE WITH OUTERMOST PRE-DRILLED HOLE OF THE YELLOW POLE

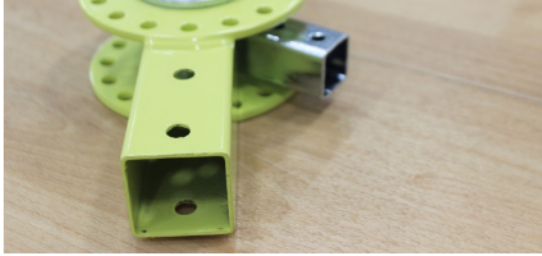
4. SECURE POSITION BY SCREWING (3) 3.5" BOLTS AND (3) NUTS THROUGH BASE AND POLES



5. ATTACH ANGLE
WHEEL BY LINING UP SILVER INNER POLE WITH
OUTERMOST HEAD OF THE ANGLE WHEEL.

6. FASTEN WITH (2) 3.2" BOLTS AND (2) NUTS.



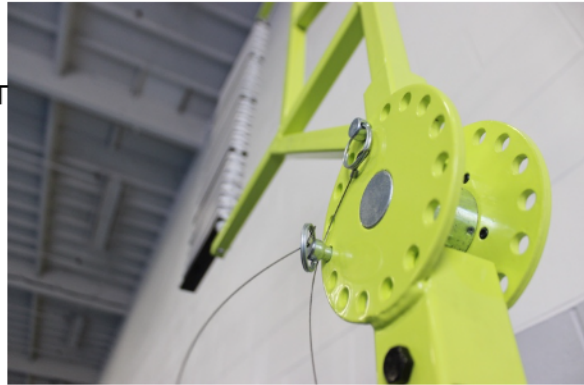


7. INSERT THE NECK OF THE ANGLE WHEEL INTO THE TOUCH-POINT HEAD

8. LINE THE PRE-DRILLED HOLES WITH THE LATCH PIN

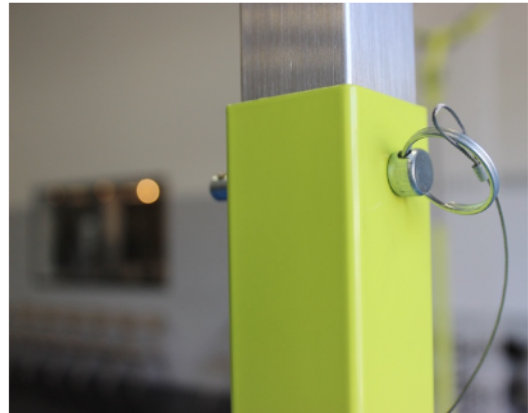


9. SET



DESIRED ANGLE WITH A LATCH PIN

10. SET TOUCH-POINT ON THE 6TH HOLE (THERE SHOULD BE 5 HOLES SHOWING UP TOP) TO REACH 11.5FT TALL. SEE TOUCH-POINT PAGE FOR ADDITIONAL INFORMATION.



INTENDED PURPOSE

11. TO INCREASE LONGEVITY, PLEASE USE 25LB WEIGHT

12. PLEASE USE IN A CONTROLLED SETTING AND JUMP AWAY FROM THE WEIGHTED LEG

13. DO NOT USE THIS APPERATUS FOR ANYTHING OTHER THAN ITS

ON-POINT BY REN ATHLETICS