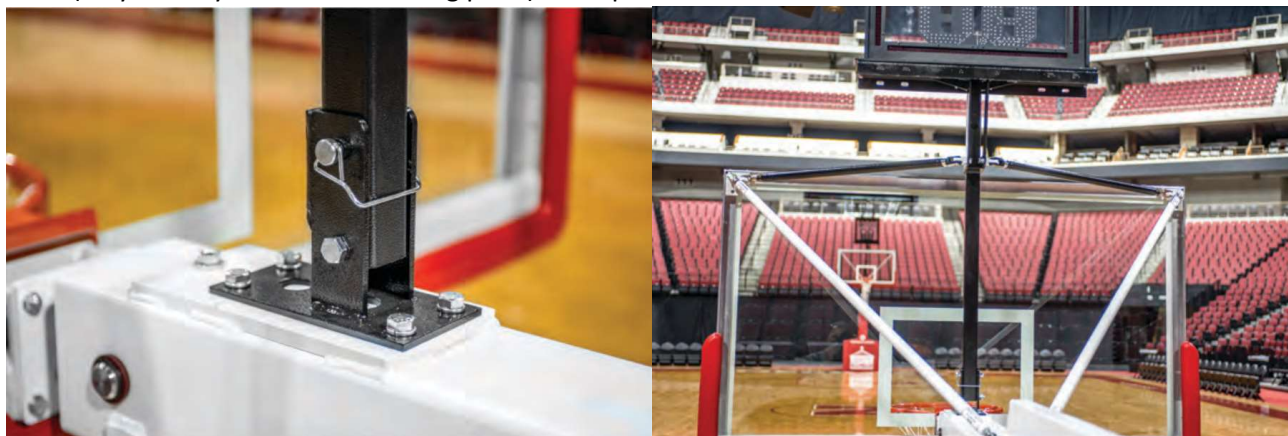


Shot Clock Bracket Assembly (SNABBSCBKT2)

- 1) Identify all parts included: Main Bracket Assembly with attached Stabilizer Turnbuckles, Boot, Hardware Bag, coil of data/power cord, and 2 vertical angle-iron sections (only used for box-style clocks). Optional additions: Replacement Corner Brackets for Backboard (US SAM).
- 2) Attach the Boot to the top of the Main Beam. Legacy Models and US SAM Models will need four ½"-13 x ¾" bolts (may already be in the mounting plate). European SAM models will need four M8 x 20 bolts.



- 3) Attach Main Bracket Assembly to the Boot using ½"-13 x 3.5" bolt, ½" fender washers, and ½" Nylok nut in the lower hole, and the ½" quick-release pin in the top. Confirm the stabilizer bars are attached correctly. The BLACK clevis ends should be attached to the main stem of the Main Bracket assembly, and the BRASS clevis ends (length-adjustable) will attach to the backboard one of two ways. **NOTE:** If running clock wiring through the stem, it is best to do this prior to attaching the Main Bracket and Boot together.



- 4) On Legacy models, the top corners of the backboard have 3 holes. The hole just inward of the V-arm attachment is where the rod end should be bolted. See above photo. On US SAM models, the top corner

brackets have 1 hole for the V-arm only. These brackets need to be replaced with the 3-hole model. (Impact driver and #3 Phillips bit recommended). Remove the 4 bolts holding in the corner bracket (ONE corner at a time!!) and replace with the new corner bracket. New bracket has the same hole pattern.

On European SAM models, you will need to attach (2) 3/8"-16 closed-loop eyebolts to the backboards using a 3/8"-16 tap and a 5/16" drill bit. These need to be added to the top edge of the backboard toward the BACK half to avoid the glass. Install about an inch outside of the outermost button-head bolt. Tighten at an angle toward stem of shot clock bracket. See photos below.



- 5) Connect the brass clevis ends to the rod ends (Legacy or US SAM) or the eyebolts (Euro SAM) with the Lock Pins and turn each turnbuckle clockwise to take any "slop" out of the connections. This will pull the stem of the Main Bracket toward the front of the Boot slightly. DO NOT overtighten the turnbuckles! Once the slop is removed, you should be able to grab the V-arm, shake the backboard, and have the clock move with the backboard without any rattling.



- 6) To lower the shot clock bracket, loosen and remove the Stabilizer Bars, secure them around the stem with the provided Velcro strap, pull the 1/2" quick-release pin, and carefully guide the clock backward to rest between the V-arms.

